

>> Low Flux Series

# Hollow Fiber Dialyzer



## Corporate Headquarters

WEIHAI WEIGAO BLOOD PURIFICATION PRODUCTS CO., LTD.

No.20 Xingshan Road, Weihai Torch Hi-tech Science Park, 264210 Weihai,  
Shandong Province, PEOPLE'S REPUBLIC OF CHINA.

Tel: +86 631 5660598 Fax: +86 631 5660598

## International Business Headquarters

WEGO HEALTHCARE (SHENZHEN) CO., LTD.

25/F, East Technology Mansion, No.16, Keyuan Road,  
Nanshan District, Shenzhen, China

Tel: +86 755 33892500 Fax: +86 755 33892508

E-mail: [info@wego-healthcare.com](mailto:info@wego-healthcare.com)

[www.wego-healthcare.com](http://www.wego-healthcare.com)



**WEGO**

THE BLOOD PURIFICATION EXPERT

PN:LF20190703



# China's Largest Independent Manufacturer of Spinning Dialyzer

## Technical specification

In Vitro Performance	F12	F13	F14	F16
Ultrafiltration coefficient(mL/h·mmHg)	16	17	18	20
Q <sub>B</sub> =200mL/min	Urea(mL/min)	180	185	190
	Creatinine(mL/min)	167	171	174
	Phosphate(mL/min)	147	152	156
	Vitamin B12(mL/min)	97	101	105
Q <sub>B</sub> =300mL/min	Urea(mL/min)	230	238	245
	Creatinine(mL/min)	213	219	224
	Phosphate(mL/min)	175	183	190
Q <sub>B</sub> =400mL/min	Urea(mL/min)	257	267	276
	Creatinine(mL/min)	231	239	246
	Phosphate(mL/min)	195	205	213
Vitamin B12(mL/min)	108	114	119	
KoA urea(mL/min)	629	698	767	902
Effective surface Area(m <sup>2</sup> )	1.2	1.3	1.4	1.6
Blood chamber volume(mL)	70	73	75	80

## Test conditions

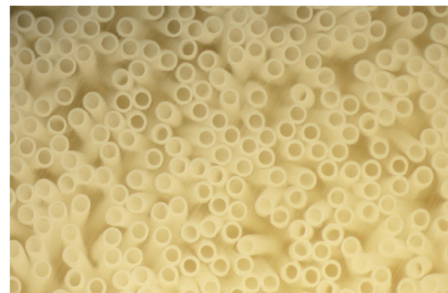
Clearances: Q<sub>D</sub>=500mL/min; Q<sub>F</sub>=0mL/min

KoA: Q<sub>B</sub>=300mL/min, Q<sub>D</sub>=500mL/min

Ultrafiltration coefficient: bovine blood, protein content: 60±5g/L, TMP: 100mmHg

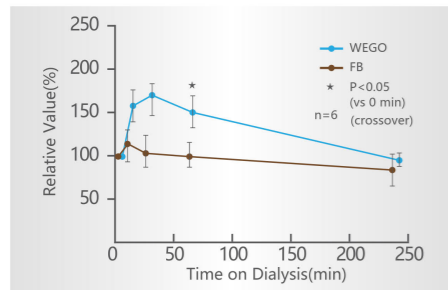
Wall thickness/ Internal diameter	40µm/200µm	Membrane material	Polysulfone
Max. TMP	500mmHg	Housing	Polycarbonate
Sterilization method	Radiation Sterilization	Potting compound	Polyurethane
Package	12 pieces /case	Sealing ring	Medical silicon rubber

Note: Products of this series have high performance of ultrafiltration and permeability. Please use only with dialysis equipment with ultrafiltration control function.



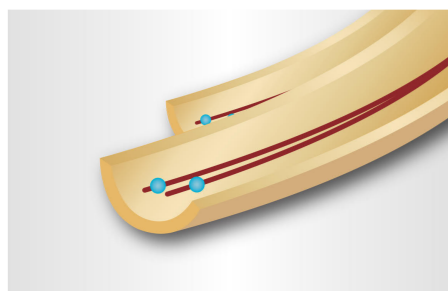
### Smooth cutting end

Can maximally reduce the adhesions and injuries of blood cells.



### Polysulfone (PSU) membrane fiber

Polysulfone (PSU) membrane fiber, an international mainstream material, retains the endotoxin and decreases the patients' micro-inflammatory reactions to ensure better biocompatibility.



### Microwave fiber design

Unique ripple structure inside dialyzer creates less dialysis channeling for more homogeneous flow and better diffusive transport and enhanced small molecule clearances.

